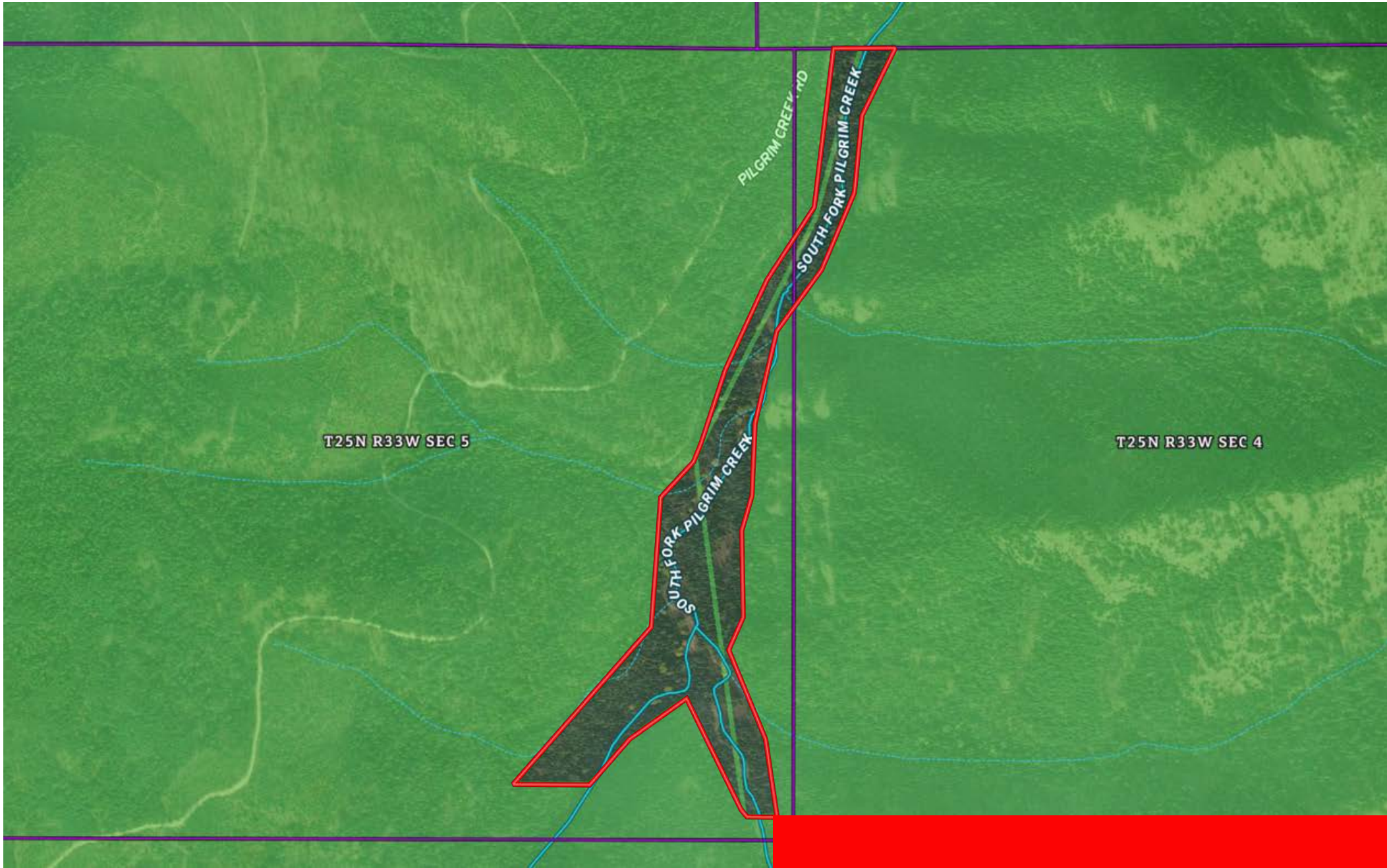


- Boundary
- Forest Service
- State Land
- Fish and Wildlife
- National Park
- Other
- BLM
- Local Government
- Conservation
- Stream, Intermittent
- River/Creek
- Water Body





- Boundary
- Forest Service
- State Land
- Fish and Wildlife
- National Park
- Other
- BLM
- Local Government
- Conservation
- Stream, Intermittent
- River/Creek
- Water Body